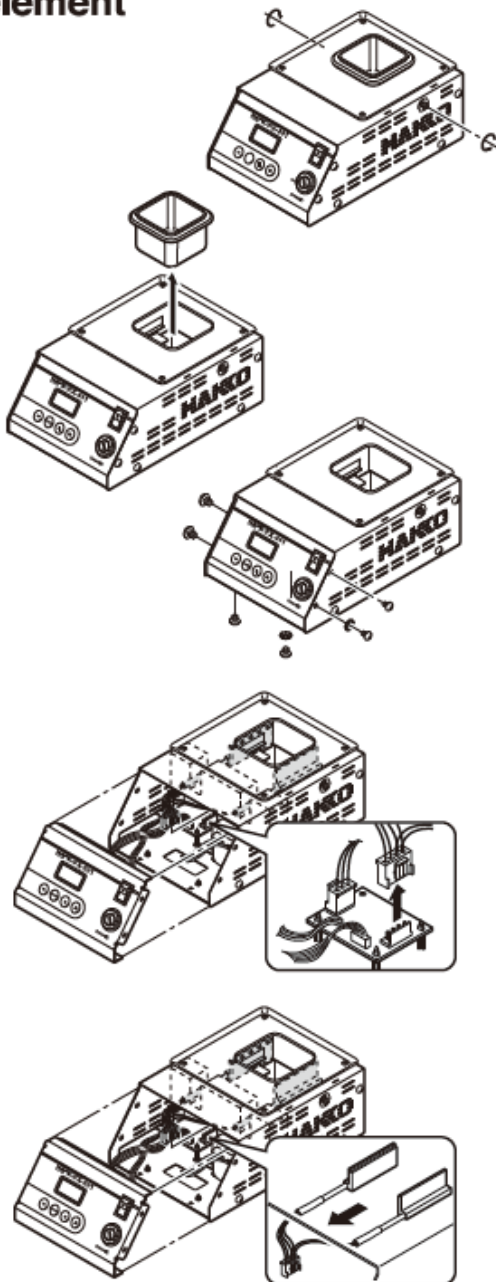


No. A1516 (220-240V) Heating element for FX-301

WARNING

Before changing the heating element, be sure to unplug the power cord and confirm the solder bath and the unit cool to room temperature. Before changing the heating element, be sure to unplug the power cord and confirm the solder bath and the unit cool to room temperature.

How to replace the heating element



1. Loosen the screws on both sides of the unit.

NOTE:

Removal is unnecessary.

2. Pull out the solder bath.

3. Remove the setscrews (6 pieces) on the unit.

4. Slide the front panel forward, remove the connector on the connector circuit board, and then pull out the unit of the heating element.

5. Insert a new heater unit and then install it by reversing the above steps.

After finishing the maintenance, measure the temperature of solder. If the measured value is different from the display temperature, enter an offset.